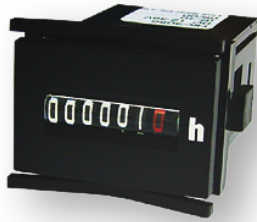


## ELECTRIC HOUR METER HK-30/46/47 SERIES

RELIABLE HIGH QUALITY HOUR METER WITH CE MARKING  
IDEAL FOR MONITORING AND MAINTENANCE OF MACHINES  
FRONT PANEL PROTECTION IP65  
RoHS COMPLIANT



**HK-30 series**



**HK-46 series**



**HK-47 series**

PANEL SIZE 36 x 24  
COMPACT SIZE HOUR METER

DIN 48 x 48  
COMPACT SIZE HOUR METER

FRONT DIMENSION  $\phi$ 58

DIN 48 x 24 IS AVAILABLE WITH  
SPECIAL FRONT PANEL

DIN RAIL MOUNT IS AVAILABLE  
WITH SPECIAL ADAPTER

ALUMINIUM CLAMP MOUNTING

### TYPES

TYPE	MODEL No.	SUPPLY VOLTAGE	FREQUENCY	MOUNTING	
HK-30	HK-3001	AC	110V	50Hz	Fork Clamp
	HK-3011		110V	60Hz	Fork Clamp
	HK-3021		230V	50Hz	Fork Clamp
	HK-3031		230V	60Hz	Fork Clamp
	HK-3041	DC	6 - 12V	-	Fork Clamp
	HK-3051		12 - 36V	-	Fork Clamp
HK-46	HK-4601	AC	110V	50Hz	Fork Clamp
	HK-4611		110V	60Hz	Fork Clamp
	HK-4621		230V	50Hz	Fork Clamp
	HK-4631		230V	60Hz	Fork Clamp
	HK-4624		230V	50Hz	Aluminium Clamp
	HK-4634		230V	60Hz	Aluminium Clamp
	HK-4661	DC	6 - 30V	-	Fork Clamp
HK-47	HK-4761	DC	6 - 30V	-	Aluminium Clamp

### APPLICATIONS

- **Applications for AC type**
  - Industrial machines
  - Control Panels
  - Compressors
  - Generators
  - Pumps
  - Air Conditioning
- **Applications for DC type**
  - Agricultural equipments
  - Construction equipments

### ACCESSORIES

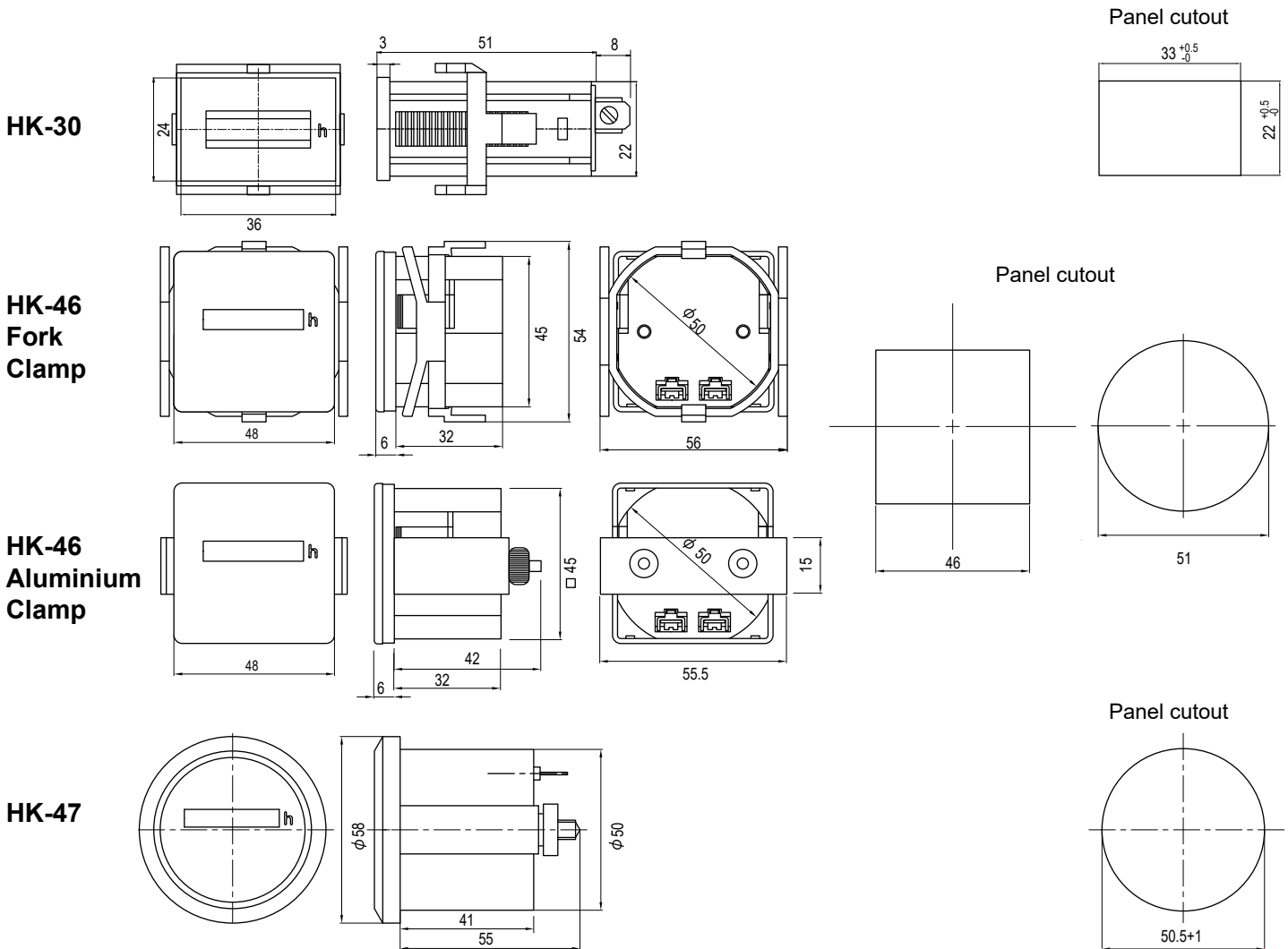
MODEL No.	
HK-46A	DIN rail adapter for HK-46 series
HK-30P	DIN 48 x 24 panel for HK-30 series

# SPECIFICATIONS

Model	AC version		DC version		
	HK-30	HK-46	HK-30	HK-46	HK-47
Power Source	110VAC, 230VAC		6-12VDC, 12-36VDC	6 to 30VDC	
Voltage Fluctuation	-10% / +10%				
Rated Current Consumption	8 mA		9 mA		
No. of digits	5 integers 2 decimals		6 integers 1 decimals		
Reading accuracy	1 / 100 hour (36 sec.)		1 / 10 hour (6 min.)		
Counting range	99999.99 hours		999999.9 hours		
Size of digit	4 mm				
Color of digit	Integers: white on black Decimals : AC50Hz / red on black AC60Hz / red on white DC / red on black				
Motor	Synchronous motor		Step motor		
Protection class	IP65 front side				
Connection	Flat pins ( 6.3 x 0.8 mm) with screw terminals				
Operating Temperature	-25 - +70°C	-25 - +80°C	-10 - +55°C	-20 - +70°C	-20 - +70°C

Operational life (when used at room temperature) is about 5 years.  
We recommend that you replace it with a new one when it reaches the end of its life.

# OUTER DIMENSION



Authorized Distributor :



**LINE SEIKI CO., LTD.**

37-7 Chuo-cho, 2-Chome  
Meguro-ku, Tokyo 152-0001 Japan  
Please visit our company website for contact details  
webtrade@line.co.jp  
<https://www.lineseiki.com>

This catalog was last revised Mar. 31, 2023.  
\*Specifications and printed contents are subject to change without prior notice.  
All Rights Reserved, Copyright © 2023, LINE SEIKI CO., LTD.